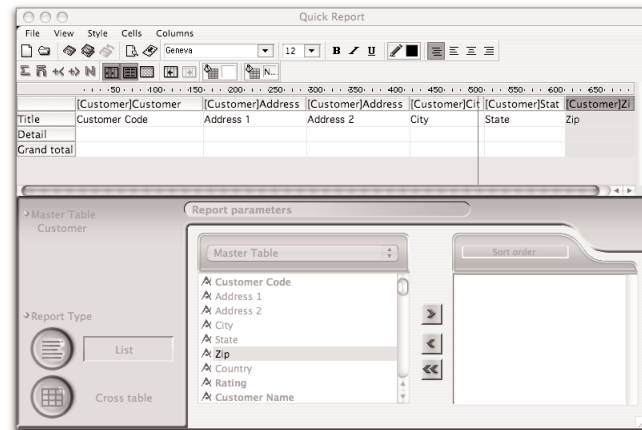


SINGLE SCREEN ESTIMATING AND MORE...

PRINT ESTIMATING & MANAGEMENT SOFTWARE FOR MACINTOSH AND WINDOWS

REPORTING

- Built-in reports for estimates, quotes, job tickets, shipping, invoices, and all database information
- Automatically generate Price Lists
- Design and develop your own forms and columnar reports, using full-featured, flexible, and easy-to-use report designers
- Design your own graphs, generate labels for mailings to clients
- Built-in word processing and automatic faxing and emailing
- Powerful exporting of data and chargeback reporting.



TECHNICAL ENVIRONMENT

The PrintPoint database is solid and very easy to maintain. Single user is a stand-alone application, while 4D's Client-Server Network Architecture, on which PrintPoint is based, is easy to install, use, and administer...enabling creation of extremely cost-effective solutions.

CLIENT TRAINING AND SUPPORT

Client training can be done onsite at your office, or at our facilities. For ongoing "comfort," our annual client support program provides software upgrades and qualified, responsive support, via telephone, modem, the Internet, and our extensive web site. We also provide a ListServer which allows our clients to communicate with us and each other, and our newsletters and user conferences provide tips and keep our customers current with our activities.

PrintPoint Software

PrintPoint Deluxe (Single-User or Client-Server)

PrintPoint Deluxe provides an end-to-end solution: Estimating, Quoting, Estimate to Job Conversion, Job Ticketing, Job Tracking, Shipping, Invoicing, and Exporting to Accounting Packages such as AccountEdge, QuickBooks for Windows and Peachtree for Windows. For in-plants there is an included Chargeback System. Deluxe also includes three supported report generators: SuperReport Designer, Label Editor, Quick Report Columnar Editor, as well as 4D's Chart Editor. The software includes Import/Export capabilities, Paper Inventory, Authors Alterations, Letter-style Quotes, Job Confirmation Letters, Price Lists, built-in Word Processing, Emailing, complete customer history and Customer Relationship Marketing Module. PrintPoint's new Calendar with fully customization make visual tracking of quotes, due dates, job follow-ups, meetings and sales efforts easy to juggle. 3-Tier Markups and Customer Ratings, and On-The-Fly Database Management.

Multi-User & Cross Platform

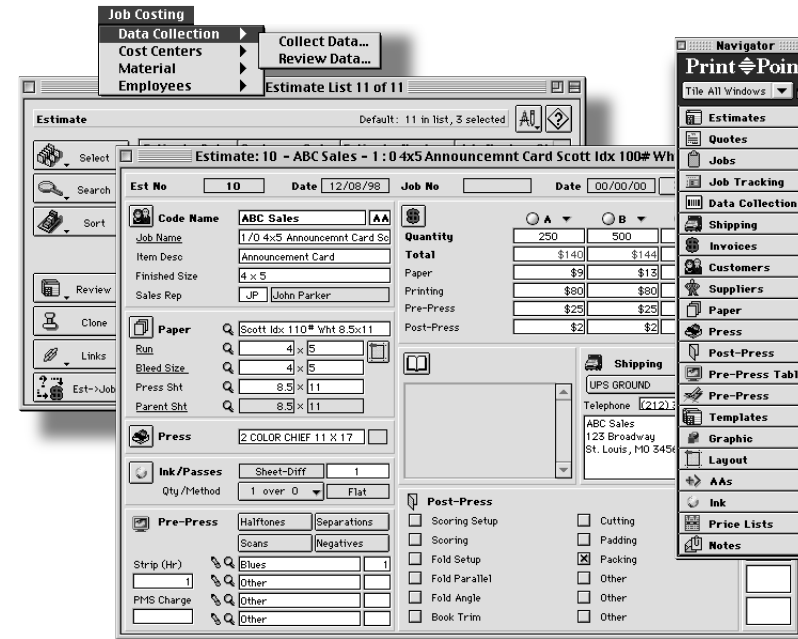
Run PrintPoint on 2 to 100 workstations, on either Macintosh or Windows, or Cross-Platform, which allows you to use Macintosh and Windows computers on the same network.

Job Costing & Data Collection

Enter data by keyboard only or combined with a barcode wand/scanner. Collect labor, materials, and outside services spent on a job. Report on Chargeable and Non-Chargeable activities, generate detailed and summary Job Cost reports, provide real-time job status information.

Mobile

Estimate from a laptop or computer and then import the information to the main computer or server. Handles estimating information only.



HIGHLIGHTS

User Interface:

- Native OSX and Windows XP (runs on OS 9 and Win2K/98)
- Navigation Palette provides instant access to all functions
- Ability to use multiple active windows at the same time
- Pull-down menus and tabbed screens make navigation a snap
- Consistent cross-platform look and feel
- Wizards help install software, setup Customers and Estimates
- Additional Wizards for easy setup of Press, Paper, and Bindery standards
- Customizable most forms including quotes, job tickets, shipping documents, invoices, labels
- Built-in Word Processor and email
- PDF help accessible from within PrintPoint.

Estimating:

- Powerful, flexible single-screen estimates
- Templates and cloning for easy data entry
- Graphical job layouts and Number Out calculator
- Speedy and intuitive interface for figuring layouts and cutouts
- Global or individual Customer Markups
- Instant analysis of estimate costs
- Easy, flexible Price Lists

Quotes:

- Letter-style quote or Combi-quote
- Unlimited number of quote items per quote
- 3 different quantities for each quote item

Job Costing, Tracking, and Data Collection:

- Automatic estimate to job conversion
- Generate Job Confirmation letters
- Track against due dates and times
- Handle both labor and materials
- Detailed/Summary End-of-Shift and Job Cost Reports
- Author's Alterations: generate Authorization Letters and track costs

Shipping:

- Customizable Delivery Receipts, Packing Slips, and Labels
- Handles multiple jobs per shipment
- Handles multiple ship-to addresses with defaults

Invoicing/Accounting/Chargebacks:

- Powerful, flexible invoicing functions (e.g., multiple tax levels)
- Handles multiple jobs per invoice
- Automatic interfaces to popular accounting and/or chargeback

Other:

- Customer Rating levels provide multi-tier pricing (flexible markups)
- Calculate sales reps' commissions
- Complete Customer history
- Powerful database searches for Customers, Estimates, Jobs,...
- On-the-fly database management
- Store detailed information for each contact at your customers
- System handles waste, outside purchases, setup costs, and minimum charges
- Full security/password control
- Easy expansion from single- to multi-user

OVERVIEW

The PrintPoint Print Estimating & Management System is a fully featured print shop management system with hundreds of clients. Our software works on Windows and/or Macintosh platforms, stand-alone or networked. PrintPoint's use of Wizards makes it extremely easy to implement, learn, and use. PrintPoint features extensive online and printable documentation.

Our full suite of software provides Estimating and Quoting, automatic conversion of estimates to jobs, Job Tickets, Job Costing and Tracking, Data Collection, Purchase Orders, Shipping, Invoicing, links to popular accounting and/or chargeback systems, and complete Customer History and Customer Relationship Module. There is full password control and extensive built-in reporting, word processing and email.

PrintPoint is extremely flexible, with a completely customizable user environment, customizable forms, settings that let you configure everything from on-screen field labels to messages that appear on forms, and a custom language profile which allows users to work in different languages.

Visit our website to download a **FREE** demo:

www.printpoint.com

Brochure_a_10_01_04_1

For More Information:
PrintPoint, Inc.

57 Ludlow Lane, Palisades, NY 10964

e-mail: info@printpoint.com tel: 800 774-6853 fax: 845 359-3468

www.printpoint.com



PrintPointTM
Print Estimating & Management Software

© 1991-2005, PrintPoint, Inc. All Rights Reserved. Companies, names, and/or data used in screens and sample output are fictitious, unless otherwise noted. Microsoft, Windows 95, Windows 98, Windows NT and Windows 2000 are either registered trademarks or trademarks of Microsoft Corporation in the United States and/or other countries. Macintosh and Power Macintosh are trademarks of Apple Computer, Inc., registered in the United States and other countries.

THE PRINTPOINT INTEGRATED MANAGEMENT ENVIRONMENT

ESTIMATING

PrintPoint's Single-Screen Estimating System is super-flexible but has been specifically designed for ease of use. The system allows you to easily search through your database for similar estimates (search by Estimate Number, Client, Item, Price,...), and features Custom Estimate Templates, automatic 3-quantity estimate generation, instant access to Paper, Press, Ink, Prepress, and Bindery settings, an advanced Graphical Environment for Job and Number Out Layouts, and allows "on-the-fly" additions and modifications to your PrintPoint database.

Quantity	A	B	C
Total	\$140	\$144	\$154
Paper	\$9	\$13	\$21
Printing	\$80	\$80	\$80
Pre-Press	\$25	\$25	\$25
Post-Press	\$2	\$2	\$2

JOB TRACKING, WORK IN PROGRESS, COSTING, DATA COLLECTION

PrintPoint allows you to automatically convert estimates to jobs, generate and print your own customized Job Ticket (it handles multiple items on a Job Ticket or individual tickets for each job component), and then track your job (in real time!) as it moves through your shop. Use our powerful Data Collection system (use keyboards and/or barcodes and/or hand-held devices) to cost your jobs. Gather statistics on Chargeable and Non-chargeable activities, keeps track of materials used. Handle Author's Authorizations properly – print, fax, or email Letters of Authorization to your clients, and accurately collect all the related costs. The system also provides special functions so you can easily handle jobs that are rerun regularly.

Est	Description	Qty A	Qty B	Qty C
1	11/12 4x5 Annouemnt Card Scott Idx	250	500	1,000
	Total	\$38.00	\$46.00	\$60.00
2	Job Name: New Job name	1,000	2,000	3,000
	Total	\$60.00	\$105.00	\$150.00

QUOTES

PrintPoint's powerful Estimating System and built-in word processor allow you to customize the format of your quote letters (you can even customize messages on your letters!), automatically generate your letters, and then print, fax, or email them to your clients (actually, to any contact in your PrintPoint customer database!).

Our Combi-Quote function allows an unlimited number of quote items per quote (with 3 different quantities for each quote).

SHIPPING

For easy shipping, PrintPoint maintains multiple shipping addresses for each client – specify shipping locations during job creation or directly from the Shipping Department. Ship single or multiple jobs at the same time. Customize the layout of your forms – Delivery Receipts, Packing Slips, and Labels - and designate separate printers for each form. PrintPoint also handles custom return addresses for brokers.

Shipping Docket No	Customer Code	Job Number	Qty Shipped	Ship Date	Ship Via
2	ABC Sales	6	2000	2/27/2004	LPS GROUP
1	ABC Sales	4	5000	2/26/2004	LPS GROUP

LAYOUT

PrintPoint allows you to import visual representations of your most common jobs from standard drawing programs, and then store and retrieve them. Display the layouts when you are estimating, and attach precise layouts to your Job Ticket for improved communication throughout your shop. Create layouts of complex Booklet jobs for accurate setup, every time. The system includes a speedy and intuitive interface for figuring layouts and cutouts, and supports Dutch/Monkey layouts.

Job No	Qty	Description	Price	Est Price	Disc. %	Tax %	Sale Amount
1	250	Annouemnt Card 4x5	\$525.62	\$325.62			\$325.62
2	500	Business Card	\$35.00	\$0.00			\$35.00

INVOICING, ACCOUNTING, CHARGEBACKS

PrintPoint Invoicing includes many powerful features for ease of use (it handles multiple items on an invoice, taxes, discounts, and flexible payables terms and due dates). It allows you to review Author's Alterations so that all applicable charges are billed. You can customize the format and content of your invoice, and customize messages that will print on the invoice. Automatically fax the invoice to your client. Then easily export information to popular accounting packages and/or your chargeback system.